

NEW FROM NORTHLANDER INDUSTRIES...

URBANA

2007



COTTAGE LIVING HAS NEVER LOOKED THIS GOOD!

CITY LOOK...COUNTRY LIVING!

LIVING AT ITS BEST

You're different. Distinctive. Special. We understand. And that's why we created Urbana, a decidedly unique expression of the cottage lifestyle that

borrowes elements of everything that appeals to the modern city dweller. But with that "away from it all" feel as well. Living area? The Urbana puts the emphasis on "living," its clean,

functional lines reminiscent of a contemporary downtown loft.

MOVE OVER, CHEF EMERIL!

Functional takes on a whole new meaning with the Urbana

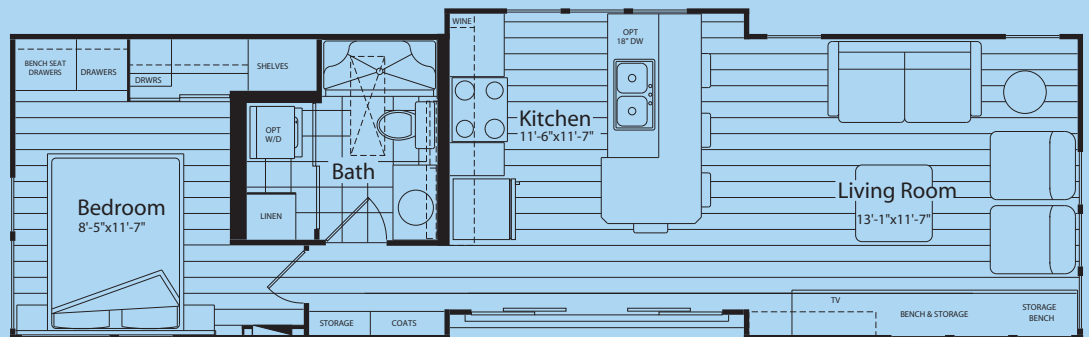


SETTLING DOWN FOR THE NIGHT We all need a good night's sleep. And the Urbana has what it takes—a comfortable space that incorporates clean design: airy and wonderfully yours all in one breath. It's all part of the getaway Urbana experience, one we're sure you'll want to relive time and time again.

YOUR SPACE REDEFINED Distant doesn't have to be uncomfortable. If pleasurable convenience is more your taste, you'll love Urbana, the new word in getaway living. Create something special with our unique blend of function and form, all wrapped up in a contemporary expression of city living. We think you'll find just what you're looking for in the Urbana.

kitchen. With optional clean steel appliances, bar stools, ready to complement the contemporary design, this is a place you'll find yourself returning to, weekend after

weekend, vacation after vacation. Entertaining close friends is part of your life and the Urbana experience fits right in, like all good things in life.



07-3709 42' x 12' Urbana (504 sq. ft.)

2007 URBANA STANDARD SPECIFICATIONS

FRAMES AND FLOORS

- Heavy-duty steel frame undercarriage with detachable hitch
- Seamless reinforced fibremesh sealite underbelly between chassis and floor
- 2"x 6" floor joists on 16" centres
- 5/8" tongue-and-groove plywood subflooring glued and screw-nailed
- Heat ducts within insulated floor cavity
- 1/2" main gas line with outlet at back end

SIDEWALLS

- 2"x 3" wall studs on 16" centres with unique belt-rail structural sidewall stiffeners
- 90" high sidewalls sloping to 113" on the door side
- 6-mil. poly vapour barrier
- Pre-finished vinyl interior wallboard
- 1/4" exterior sheathing
- Barricade exterior building wrap
- Horizontal exterior vinyl siding

ROOF AND CEILING

- 2/12 roof pitch with large overhangs
- Pre-engineered mono roof trusses on 16" centres (88 lbs. per sq. ft. ground snow load)
- 3/8" roof sheathing
- Glass guard snow and ice shield protection at the eave with shingle underlayment on remainder of roof
- 25-year self-sealing asphalt roof shingles
- Vented attic space to eliminate moisture and heat build-up
- Continuous vented soffit and aluminum fascia
- Expansive sloped ceiling throughout entire unit
- Pre-textured drywall ceiling

PLUMBING

- Aquapex cross-linked polyethylene water lines
- 10-gallon propane fast-recovery water heater
- Euro style vanity with vessel sink and chrome faucet
- One piece 1.6-gallon ultra low-flush water-saver toilet

- Deluxe one-piece fibreglass shower with glass doors
- Single lever chrome bath faucets
- Chrome contemporary bathroom accessories
- Double compartment stainless steel kitchen sink with single-lever chrome faucet

ELECTRICAL AND HEATING

- 24-circuit 30-amp hydro panel with plug-in cord
- Electric smoke detector
- Decora-style light switches and receptacles
- Wired and prepared for basement air conditioner
- 60-cfm bathroom exhaust fan
- Exterior and interior GFCI receptacle
- Exterior soffit lights at patio door
- 40,000 BTU forced air propane furnace with in-floor ducting, electronic ignition and wall thermostat
- Contemporary residential interior light fixtures
- 2 TV and 2 telephone access box

WINDOWS AND DOORS

- Vertical sliding vinyl thermopane windows with removable screens
- Premium 9'-9"x 6'-8" frenchwood 4 panel gliding patio door with double retractable screens, low "E" glass and 4 foot bolt auxiliary locks

OWENS CORNING PINK FIBREGLASS INSULATION

- Ceilings: R-20 fibreglass insulation
- Walls: R-8 fibreglass insulation
- Floors: R-20 fibreglass insulation



INTERIOR DECOR FINISH

- European style kitchen cabinetry with white thermofoil cabinet doors
- Premium laminate kitchen and bathroom counters
- Decorative mirroflex brushed aluminum backsplash in kitchen
- Roller glide-out drawer

hardware

- Custom built-in entertainment cabinet with euro acid etched sliding glass doors and bench seating with storage below
- Laminate wood flooring through-out (except bathroom)
- White flat panel interior doors with brushed pewter lever style door handles
- Skylight in bathroom
- Large built-in medicine cabinet with shelf, mirror and low voltage halogen accent lighting
- Platform bed base with built-in nightstands in master bedroom
- Built-in bench seat and chest of drawers in master bedroom
- Sandblasted tempered glass sliding wardrobe doors in master bedroom
- Custom designer drapery package
- Panel track vertical blind system at patio door

WARRANTY

- 1-year product warranty, factory to consumer via dealer.
- 5-year limited warranty for components and performance relating to structural integrity, weather penetration, electrical distribution system, plumbing and heating delivery systems, window and door performance

All Park Models manufactured by Northlander Industries are constructed in compliance with the stringent standards of the C.S.A.-Z241 Park Model Standard



The manufacturer reserves the right to improve or modify the product, without notice or obligation, which may change materials, equipment, specifications or designs. Information contained herein is from the latest data available at the time of printing. Photographs and descriptions may contain some optional extras.



Northlander Industries

165 Thames Road East, Hwy. 83, Exeter, ON, Canada N0M 1S3
Tel.: 519-235-1530 • Fax: 519-235-2789
Email: innovations@northlanderindustries.com
www.northlanderindustries.com

YOUR AUTHORIZED NORTHLANDER PARK MODEL DEALER: